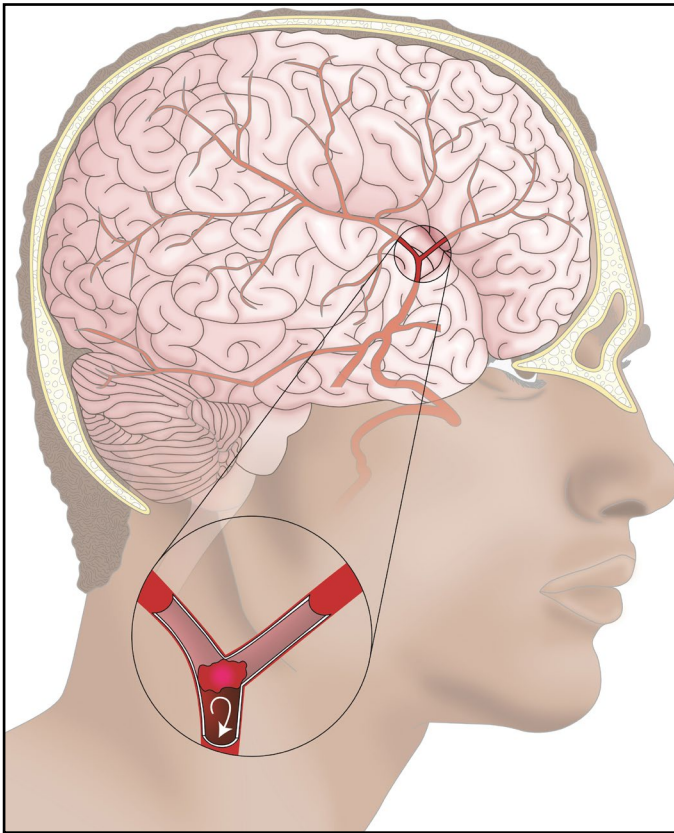


Receiving Alteplase (t-PA) for Stroke Symptoms



Drawings © Allina Health System

An ischemic stroke is caused by a clot that gets stuck in a blood vessel in the brain.

General Information

You received a medicine called alteplase, also known as tissue plasminogen activator (t-PA). It helps dissolve the blood clot stuck in a blood vessel in your brain.

The medicine helps restore blood flow to your brain. This may help reduce physical changes caused by a stroke.

What You Can Expect

For 24 hours after you receive the medicine, nurses will:

- check your vital signs (temperature, pulse rate, breathing rate and blood pressure)
- watch you closely (ask you who you are and where you are, listen to your speech, watch for changes in your facial muscles and make sure your arms and legs have strength).

They are watching for side effects such as:


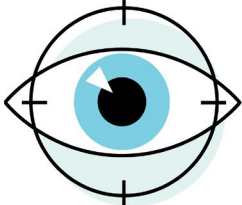



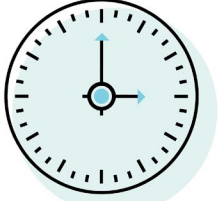
- bleeding into your brain or other parts of your body
- swelling of your mouth and throat.

You may have imaging tests (such as an MRI or CT scan) to check how your brain responds to the medicine.

Your Follow-up Care

- Tell your health care provider you were treated for stroke symptoms and received alteplase.
- Keep all follow-up appointments with your health care provider.
- Watch for other stroke symptoms. Call 911 if you have any of them. (See the BE FAST box on the other side.)

(over)

	B	Balance – Sudden difficulty with balance
	E	Eyes – Sudden problems with vision in one or both eyes
	F	Face – Face or smile droops on one side
	A	Arms – Sudden weakness in arm or leg
	S	Speech – Unable to repeat a simple sentence, or slurred words
	T	Time – If you observe any of these symptoms, call 9-1-1 immediately

BE FAST was developed by Intermountain Healthcare, as an adaptation of the FAST model implemented by the American Stroke Association. Reproduced with permission from Intermountain Healthcare. Copyright 2011, Intermountain Health Care.

Get medical help right away if you have any signs of stroke.