

# ENDOCARDITIS IN PREGNANCY

22

## Outcomes of Endocarditis in Pregnancy: A Single-Center Experience

Kayle Shapero,<sup>1,\*</sup> Sami El-Dalati,<sup>2,\*</sup> Kathryn Berlacher,<sup>1</sup> and Christina Megli<sup>3</sup>

<sup>1</sup>Heart and Vascular Institute, University of Pittsburgh Medical Center, Pittsburgh, Pennsylvania, USA, <sup>2</sup>Department of Infectious Disease, University of Kentucky Medical Center, Lexington, Kentucky, USA, and <sup>3</sup>Department of Obstetrics, Gynecology and Reproductive Sciences University of Pittsburgh School of Medicine, Magee Women's Research Institute, Pittsburgh, Pennsylvania, USA

Demographics	Non-Pregnant Average		Pregnant Average	
	Median or Count	% or IQSR/SD	Median or Count	% or IQSR/SD
Age at Delivery	32.6	6.9	29.6	5.8
Hx of IVDU	118	80.8	29	85.3
Hepatitis C	62	42.5	23	67.8
<b>Medication for OUD</b>				
Methadone	11	7.5	7	20.6
Suboxone	24	16.4	13	38.2
Suspected Source IVDU	113	77.4	25	73.5

23

## Outcomes of Endocarditis in Pregnancy: A Single-Center Experience

Kayle Shapero,<sup>1,2</sup> Sami El-Dalati,<sup>2,3</sup> Kathryn Berlacher,<sup>1</sup> and Christina Megli<sup>3</sup>

<sup>1</sup>Heart and Vascular Institute, University of Pittsburgh Medical Center, Pittsburgh, Pennsylvania, USA, <sup>2</sup>Department of Infectious Disease, University of Kentucky Medical Center, Lexington, Kentucky, USA, and <sup>3</sup>Department of Obstetrics, Gynecology and Reproductive Sciences University of Pittsburgh School of Medicine, Magee Women's Research Institute, Pittsburgh, Pennsylvania, USA

	Non-Pregnant Average		Pregnant Average	
Demographics	Median or Count	% or IQSR/SD	Median or Count	% or IQSR/SD
Age at Delivery	32.6	6.9	29.6	5.8
Hx of IVDU	118	80.8	29	85.3
Hepatitis C	62	42.5	23	67.8
<b>Medication for OUD</b>				
Methadone	11	7.5	7	20.6
Suboxone	24	16.4	13	38.2
Suspected Source IVDU	113	77.4	25	73.5

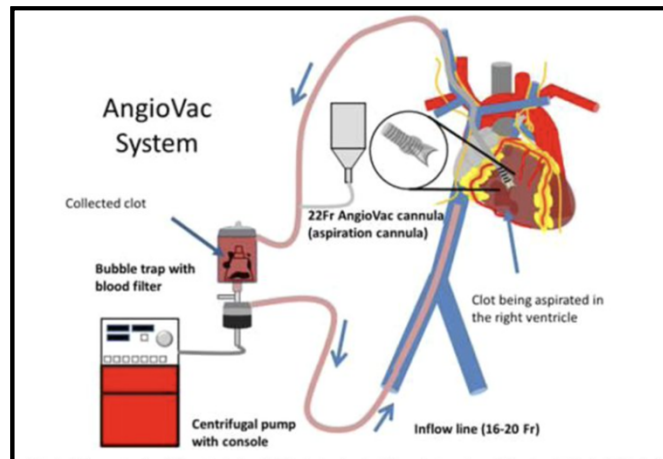
24

# BACK TO THE CASE...

25

## CLINICAL COURSE

- Cardiothoracic Surgery = medical management w/consideration of valve surgery after delivery.
- Improved w/IV antibiotics & was extubated.
- 29 + 6 weeks:
  - ↑ Tachypnea, Tachycardia, Oxygen Needs
  - CT w/worsening septic emboli and small pericardial effusion.
  - Multidisciplinary rounds = decision for debulking of TV vegetation.



26

## SIDEBAR – RIFAMPIN

27

## ADDICTION MEDICINE CONSULT

- Opioid withdrawal onset within 12 hours of admission and patient wanting to leave AMA.
- Short-acting opioids started for pleuritic chest pain.
- Patient open to initiation of buprenorphine-naloxone.
- Goal is to avoid precipitated withdrawal with micro-induction on buprenorphine.



Allina Health

Obstetric Complications:  
The Essentials and More



28

28

## MICRO-INDUCTIONS

Allina Health

29

29

## CLINICAL OPIOID WITHDRAWAL SCALE (COWS)

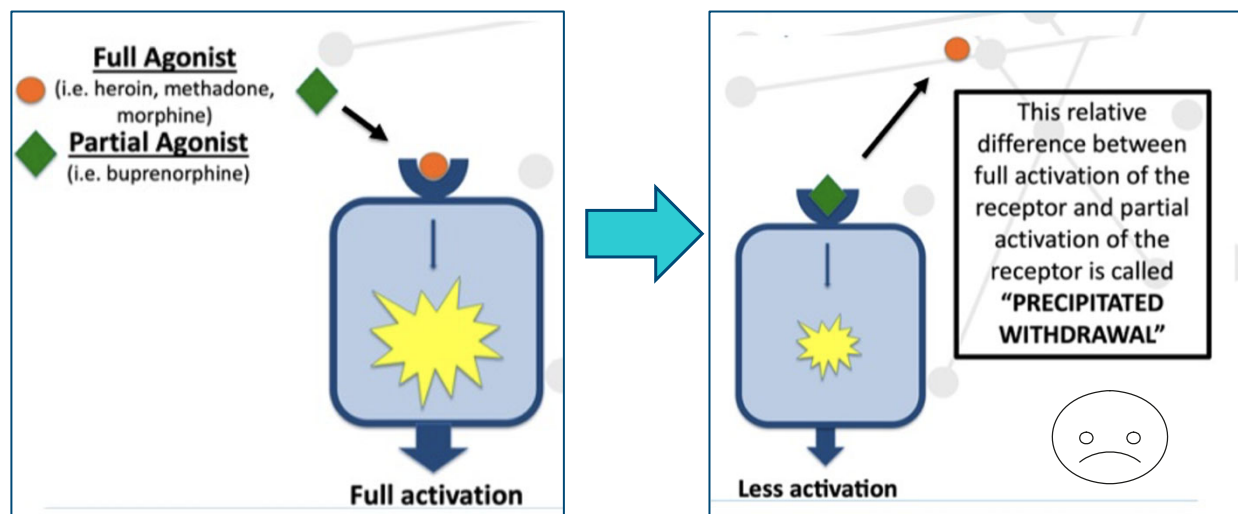
<b>Resting Pulse Rate:</b> beats / minute <i>Measured after patient is sitting or lying for one minute</i> 0 pulse rate 80 or below 1 pulse 81 to 100 2 pulse 101 to 120 3 pulse rate greater than 120	<b>GI Upset:</b> <i>over last 1/2 hour</i> 0 no GI symptoms 1 stomach cramps 2 nausea or loose stool 3 vomiting or diarrhea 4 multiple episodes of diarrhea or vomiting	<b>Bone or Joint aches:</b> <i>If the patient was having pain previously, only the additional component attributed to opiates withdrawal is scored</i> 0 not present 1 mild diffuse discomfort 2 patient reports severe diffuse aching of joints/muscles 3 patient is rubbing joints or muscles and is unable to sit still because of discomfort	<b>Gooseflesh skin:</b> 0 skin is smooth 1 piloerection of skin can be felt or hairs standing up on arms 2 prominent piloerection
<b>Sweating:</b> <i>over past 1/2 hour not accounted for by room temperature or patient activity.</i> 0 no report of chills or flushing 1 subjective report of chills or flushing 2 flushed or observable moistness on face 3 beads of sweat on brow or face 4 sweat streaming off face	<b>Tremor:</b> <i>Observation of outstretched hands</i> 0 no tremor 1 tremor can be felt, but not observed 2 slight tremor observable 3 gross tremor or muscle twitching	<b>Runny nose or tearing:</b> <i>Not accounted for by cold symptoms or allergies</i> 0 not present 1 nasal stuffiness or unusually moist eyes 2 nose running or tearing 3 nose constantly running or tears streaming down cheeks	
<b>Restlessness:</b> <i>Observation during assessment</i> 0 able to sit still 1 reports difficulty sitting still, but is able to do so 2 frequent shifting or extraneous movements of legs/arms 3 unable to sit still for more than a few seconds	<b>Yawning:</b> <i>Observation during assessment</i> 0 no yawning 1 yawning once or twice during assessment 2 yawning three or more times during assessment 3 yawning several times/minute	<b>Score:</b> • 5-12 = Mild • 13-24 = Moderate • 25-36 = Moderately Severe • > 36 = Severe	
<b>Pupil size:</b> 0 pupils pinned or normal size for room light 1 pupils possibly larger than normal for room light 2 pupils moderately dilated 3 pupils so dilated that only the rim of the iris is visible	<b>Anxiety or Irritability:</b> <i>Measured after patient is sitting or lying for one minute</i> 0 none 1 patient reports increasing irritability or anxiousness 2 patient obviously irritable or anxious 3 patient so irritable or anxious that participation in the assessment is difficult		

Allina Health

Obstetric Complications:  
The Essentials and More

30

## RECEPTOR ACTIVATION



Allina Health

Obstetric Complications:  
The Essentials and More

31

## Obstetric Complications: The Essentials and More



AllinaHealth

