

LUNG CANCER SCREENING PROGRAM



1

CONTENT

- History of Lung Cancer Screening- The Evidence
- Criteria for Screening- USPSTF Guidelines
- Lung Cancer Screening Program Workflows and Progress
- Education Materials for Patients
- Conclusion



2

2

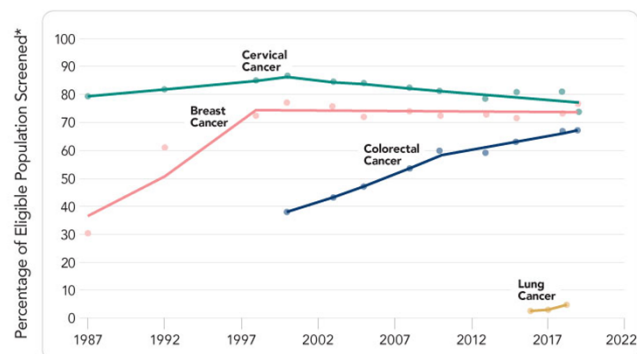
WHAT IS LUNG CANCER SCREENING?

- Yearly low dose lung CT scan for those who are eligible.
- LDCT may be done more often to follow up on concerns seen on a screening exam
- Covered by Medicare/insurance companies under "screening"

3

US CANCER SCREENING RATES- INCOMPLETE AND UNEVEN

Figure 1
U.S. Cancer Screening Rates

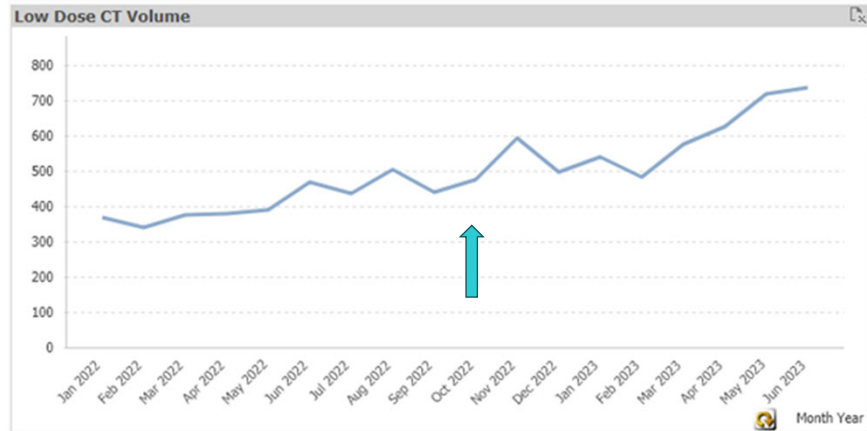


[View Figure Sources](#)

4

ALLINA'S LUNG SCREENING PROGRESS

Month/Year	Lung Screening Volume
January 2022	367
February 2022	340
March 2022	376
April 2022	377
May 2022	390
June 2022	468
July 2022	435
August 2022	503
September 2022	440
October 2022	475
November 2022	591
December 2022	494
January 2023	540
February 2023	482
March 2023	573
April 2023	625
May 2023	715
June 2023	734
Total volume-	8,925



9

PATIENT EDUCATION MATERIALS

Patient Education is available to order pamphlets in SmartWorks:

Product numbers:

- Lung Cancer Screening fact sheet: can-ah-17416
- Lung Cancer Screening Shared Decision Making Tool: can-ah-78700

***New* Digital Care-** Lung Cancer Screening is available to send to patients electronically

All patient education is available in English, Hmong, Russian, Somali & Spanish

10

YOUR VALUES
YOUR PREFERENCES
YOUR CHOICE

Allina Health

Considering Lung Cancer Screening

Lung Cancer

Lung cancer is a disease in which cells in the lung(s) grow out of control.

Lung cancer is the leading cause of cancer death among adults. More people die of lung cancer each year than from colon, breast and prostate cancers combined.

Smoking is the biggest risk factor for lung cancer.



8 out of 10 lung cancers are caused by smoking.

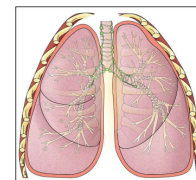
Lung Cancer Screening

Lung cancer screening is done to find lung cancer early when it is most treatable.

Your health care provider will talk with you to see if you qualify for a low-dose lung cancer screening. It uses a CT (computed tomography) scan to provide a detailed picture of your lungs.

Your provider will talk to you about the following. Together, you will decide what is best for you.

- the benefits and risks of screening
- your preferences and values around screening
- quitting smoking (See page 3.)



The lungs are a pair of cone-shaped breathing organs inside your chest.

Importance of Ongoing Screening

It is important to have a low-dose lung cancer screening every year to monitor for development of lung cancer.

Having your screening every year increases the chance of finding lung cancer early and being treated successfully.

- what the possible results can be and how you will be informed
- how you will need to have low-dose lung cancer screenings each year.

CONCLUSION

Allina has always been in front of lung cancer screening, but we still have work to do!

Spread the Word! -Consider educating your family and patients about lung cancer screening.

Have them discuss lung cancer screening with their primary doctor.

11

THANK YOU!

Allina Lung Screening Program Contacts:

Hub- 651-241-7578 IB Pool- 10600

Monica Cook, RN Lung Screening Hub RN

Laurel Pearson Oswald- Lung Screening and Thoracic Manager

Dr. Anuja Sharma- Co-chair Lung Screening Program Committee

12